

# THE ORIGINAL RAINIER BREWERY

**Brew House, 5900 Airport Way South, Seattle WA**  
visit us at [sabey.com](http://sabey.com)

Clete Casper    Joe Sabey    Debbie Sabey  
cletec@sabey.com    joes@sabey.com    debbies@sabey.com  
206.277.5229    206.281.8700    206.281.8700

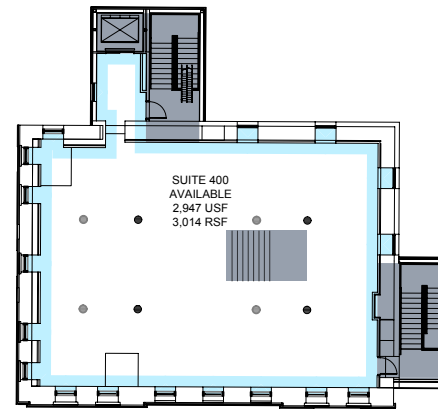
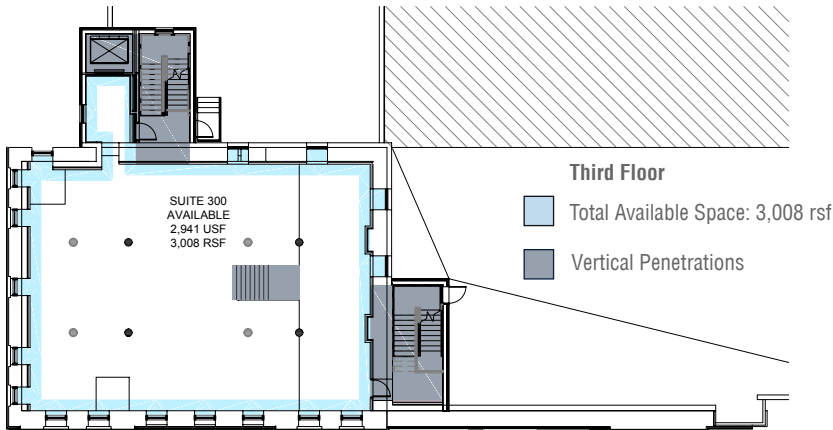


## BREW HOUSE

At The Original Rainier Brewery



**SPECTACULAR  
VIEW SPACE ON  
3RD & 4TH FLOORS!**



### Highlights

- Lots of natural light
- Elevator access
- Exposed brick
- Historic detailing
- Ideal for retail / office
- Seismically upgraded
- On site parking
- Easy access to I-5 and Highways 99 & 509
- Walk to restaurants and specialty shops
- Ornate historical internal staircase connects 3rd & 4th floors for single user
- Dynamic arts/crafts community and more...

### The Brew House at The Original Rainier Brewery

The Brew House has undergone a complete renovation that has made it one of Seattle's most intriguing commercial office spaces. The lower two floors are occupied by Georgetown's newest resident, Fran's Chocolates, leaving the two top floors for offices. High ceilings, exposed brick, natural light and

an open floor plan - this space will be ideal for design, legal or financial professionals. The grand staircase is available to the occupant taking both the third and fourth floors. All floors are also elevator accessible.

Retail / Office Space Available  
New Warehouse / Retail Expansion  
7,906 sf +/- available now

**SABEY**

12201 Tukwila International Blvd. 4th Floor  
Seattle, WA 98168

# THE ORIGINAL RAINIER BREWERY

**Brew House, 5900 Airport Way South, Seattle WA**  
visit us at [sabey.com](http://sabey.com)

Clete Casper    Joe Sabey    Debbie Sabey  
[cletec@sabey.com](mailto:cletec@sabey.com)    [joes@sabey.com](mailto:joes@sabey.com)    [debbies@sabey.com](mailto:debbies@sabey.com)  
206.277.5229    206.281.8700    206.281.8700



**SABEY**

12201 Tukwila International Blvd. 4th Floor  
Seattle, WA 98168