

# General Office Annex

6004 Airport Way South, Seattle WA  
Visit us at [sabey.com](http://sabey.com)

Clete Casper	Joe Sabey	Debbie Sabey
<a href="mailto:cletec@sabey.com">cletec@sabey.com</a>	<a href="mailto:joes@sabey.com">joes@sabey.com</a>	<a href="mailto:debbies@sabey.com">debbies@sabey.com</a>
206.277.5229	206.281.8700	206.281.8700

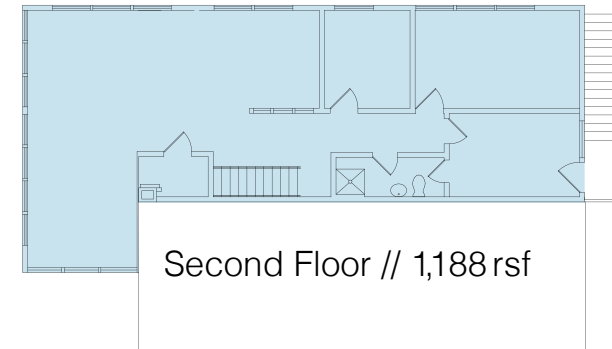
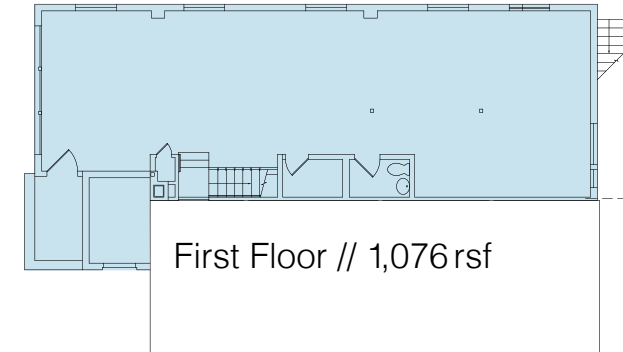
**NOW AVAILABLE FOR  
LEASE IN HISTORIC  
GEORGETOWN**



**GENERAL  
OFFICE  
ANNEX**  
At The Original Rainier Brewery

## AVAILABLE SPACE

- First Floor**  
Square Footage: 1,076 rsf
- Second Floor**  
Square Footage: 1,188 rsf
- Total Available Space**  
2,264 rsf



## Original Rainier Brewery

The Original Rainier Brewery is a designated landmark and a mixed-use property located in historic Georgetown. The Brewery has helped sustain Georgetown's steady evolution as a magnet for the creative industries of all types - designers, artisans, fine artists, crafts people and light manufacturing businesses - are drawn to the dynamic, quirky urban chic of this neighborhood. Be part of the up-and-coming Georgetown district!

Annual Rent: \$12 NNN

## Highlights

- Lots of natural light
- On site parking
- Gated exterior storage
- Easy access to I-5 and Highways 99 & 509
- Walk to restaurants and specialty shops
- Dynamic arts/crafts community and more...

**SABEY**

12201 Tukwila International Blvd. 4th Floor  
Seattle, WA 98168