



# Riverfront Technical Park

2811 South 102nd Street  
 Seattle WA 98121 // Floor 1

## Description

Riverfront Technical Park is a 175,000 sf office/flex building located in the South Seattle area, with easy access to I-5, I-405, Hwy 99 and East Marginal Way. Its proximity to Boeing field has made it attractive to the aeronautics industry. In addition to great location, Riverfront Technical Park offers excellent parking and heavy electrical infrastructure making it also ideal for office, research & development and call centers.

## Highlights

- Ample contiguous square footage
- Minutes to downtown Seattle, SeaTac Airport and Boeing Field
- Abundant parking
- Secure card access
- Multiple fiber carriers
- Loading dock
- Immediately adjacent to US Post Office
- Building signage available



**MAJOR FREEWAYS & TRANSPORTATION**  
 Hwy 99  
 I-5  
 405

**SHOPPING & SIGHT SEEING**  
 Museum of Flight  
 Foster Golf Links  
 Rainier Golf and Country Club  
 Westfield-Southcenter Shopping Center  
 SeaTac International Airport

**Metro Transit**  
 Route 124  
 Riverfront Technical Park is served by this King County Metro transit route.



Joe Sabey  
 joes@sabey.com  
 206.281.8700

Clete Casper  
 cletec@sabey.com  
 206.277.5229



12201 Tukwila International Blvd. 4th Floor  
 Seattle, WA 98168 | Visit us at [sabey.com](http://sabey.com)

# Riverfront Technical Park

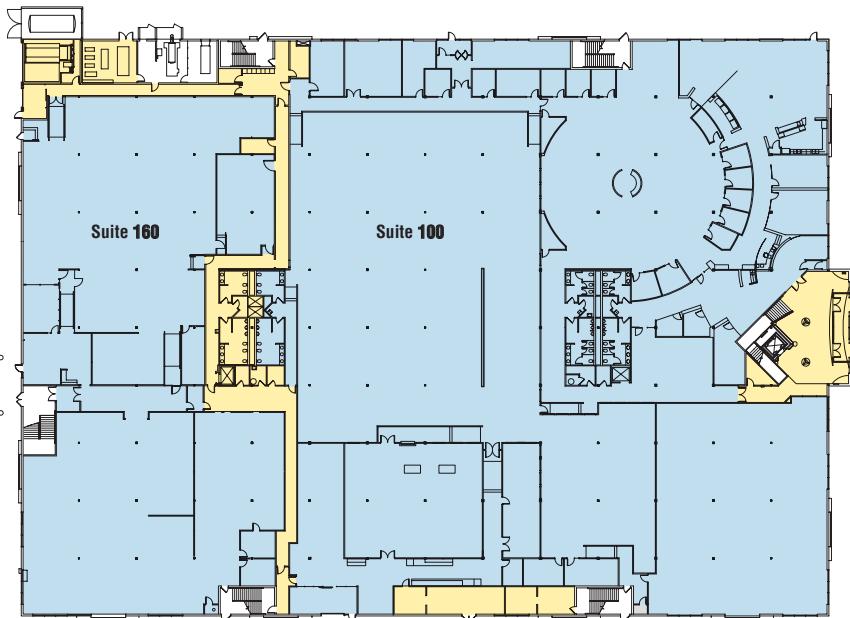
2811 South 102nd Street

Seattle WA 98168



## Highlights

- Large, efficient, open floor plans
- Ample contiguous square footage
- Spacious, well-appointed lobby



First Floor // Total Available Space // 84,558 rsf

Available

Suite 100 // Square Footage: 60,194 rsf

Suite 160 // Square Footage: 24,364 rsf

Floor Common



Joe Sabey  
joes@sabey.com  
206.281.8700

Clete Casper  
cletec@sabey.com  
206.277.5229

## SABEY

12201 Tukwila International Blvd. 4<sup>th</sup> Floor  
Seattle, WA 98168 | Visit us at [sabey.com](http://sabey.com)