

THE ORIGINAL RAINIER BREWERY

Bottling Plant, 5624-5810 Airport Way South, Seattle WA

Visit us at sabey.com

Clete Casper

Joe Sabey

Debbie Sabey

cletec@sabey.com

joes@sabey.com

debbies@sabey.com

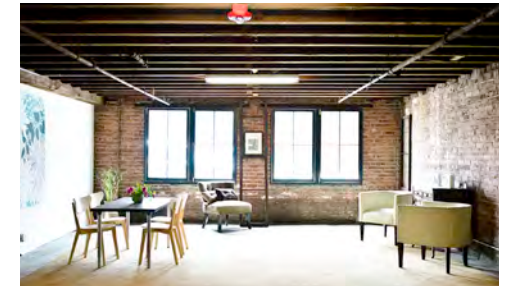
206.277.5229

206.281.8700

206.281.8700



**NOW AVAILABLE FOR
LEASE IN HISTORIC
GEORGETOWN**



Highlights

- Lots of natural light
- Exposed brick
- Historic detailing
- On site parking
- Easy access to I-5 and Highways 99 & 509
- Walk to restaurants and specialty shops
- Dynamic arts/crafts community and more...

The Bottling Plant in The Original Rainier Brewery

The Original Rainier Brewery is a designated landmark and a mixed-use property located in historic Georgetown, a colorful and authentic atmosphere evocative of Seattle's past. The Brewery has helped sustain Georgetown's steady evolution as a magnet for the creative industries of all types - designers, artisans, fine artists, crafts people and light manufacturing businesses - are drawn to the dynamic, quirky urban chic of this neighborhood. The Original Rainier Brewery provides a warm and welcoming atmosphere within its beautiful natural light, brick walls and concrete or hard wood floors. Be part of the up-and-coming Georgetown district!

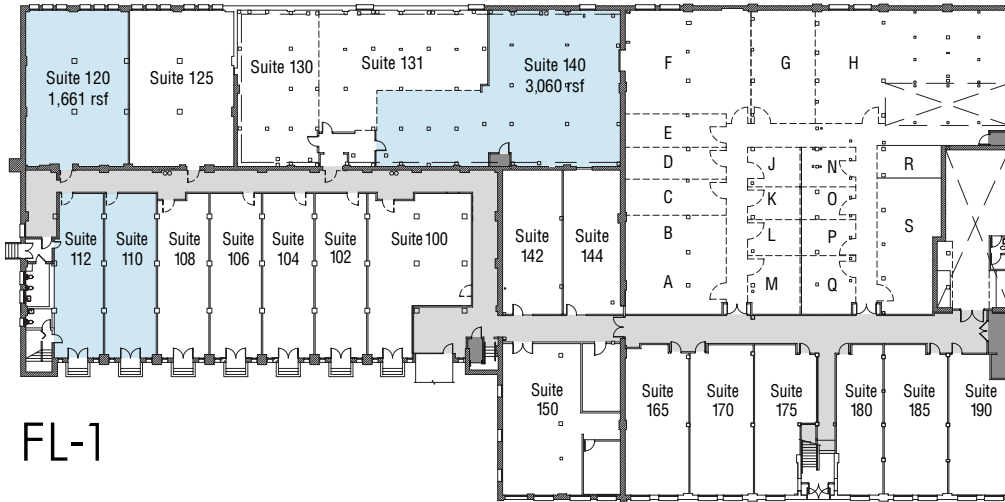
SABEY

12201 Tukwila International Blvd. 4th Floor
Seattle, WA 98168

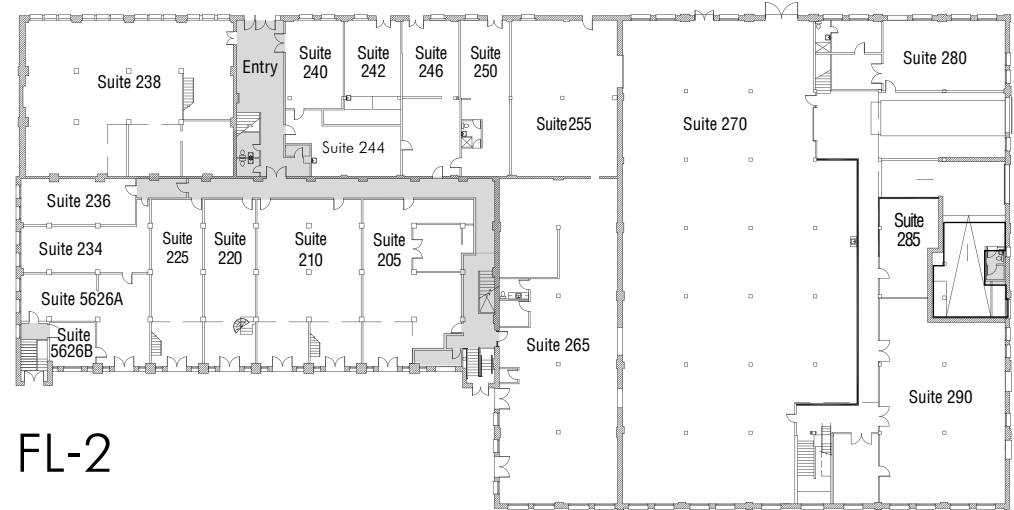
THE ORIGINAL RAINIER BREWERY

Bottling Plant, 5624-5810 Airport Way South, Seattle WA
 Visit us at sabey.com

Clete Casper Joe Sabey Debbie Sabey
cletec@sabey.com joes@sabey.com debbies@sabey.com
 206.277.5229 206.281.8700 206.281.8700



FL-1



FL-2



FL-3

STORAGE AVAILABLE SPACE

- **First Floor**
- Suite 120**
Square Footage: 1,661 rsf
- Suite 140**
Square Footage: 3,060 rsf

STUDIO SPACE

- **Suite 110 / 112**
Square Footage: 1,707 rsf

BOTTLING PLANT

At The Original Rainier Brewery



● **Leasing Office**
Suite 300



12201 Tukwila International Blvd. 4th Floor
 Seattle, WA 98168