

# THE ORIGINAL RAINIER BREWERY

**Malt House, 5840-5890 Airport Way South, Seattle WA**

Visit us at [sabey.com](http://sabey.com)

Clete Casper  
[cletec@sabey.com](mailto:cletec@sabey.com)  
206.277.5229

Joe Sabey  
[joes@sabey.com](mailto:joes@sabey.com)  
206.281.8700

Debbie Sabey  
[debbies@sabey.com](mailto:debbies@sabey.com)  
206.281.8700



## MALT HOUSE

At The Original Rainier Brewery



### The Malt House at The Original Rainier Brewery

Spacious areas for creative enterprises including light manufacturing, food production, creative businesses and artists. Size of spaces makes them versatile as well as utilitarian. Located just off Airport Way South. This circa 1914 building has ample on and off street parking. Be part of the unique Georgetown District!

#### Highlights

- Exposed brick
- Historic detailing
- Dynamic Arts/Craftsman Community
- 19 ft. clear ceiling height
- On site parking
- Easy access to I-5 and Highways 99 & 509
- Walk to restaurants and specialty shops
- Dynamic arts/crafts community and more...



**SABEY**

12201 Tukwila International Blvd. 4th Floor  
Seattle, WA 98168

# THE ORIGINAL RAINIER BREWERY

Malt House, 5840-5890 Airport Way South, Seattle WA

Visit us at [sabey.com](http://sabey.com)

Clete Casper

[cletec@sabey.com](mailto:cletec@sabey.com)

206.277.5229

Joe Sabey

[joes@sabey.com](mailto:joes@sabey.com)

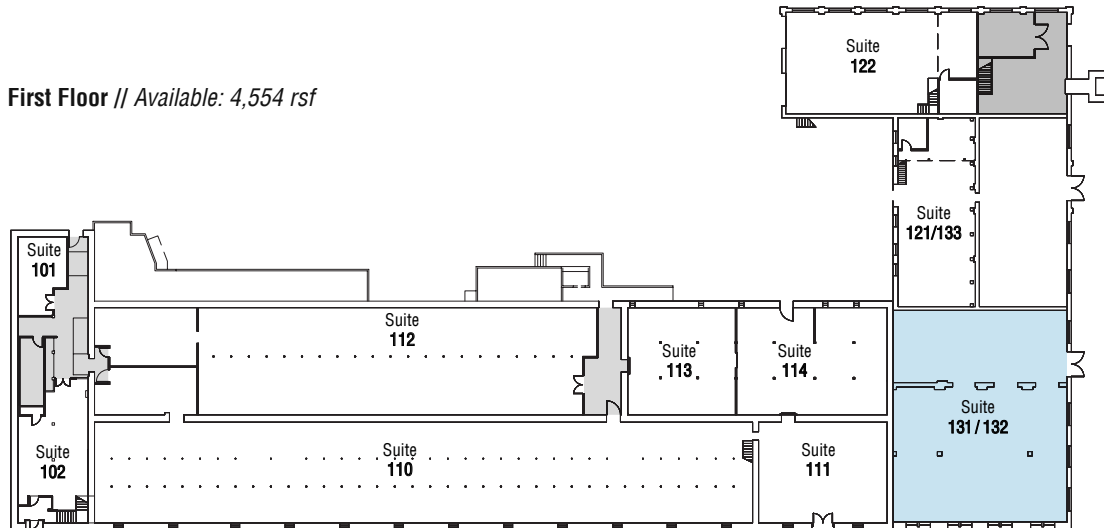
206.281.8700

Debbie Sabey

[debbies@sabey.com](mailto:debbies@sabey.com)

206.281.8700

First Floor // Available: 4,554 rsf



**AVAILABLE**  
May 1, 2018 or before

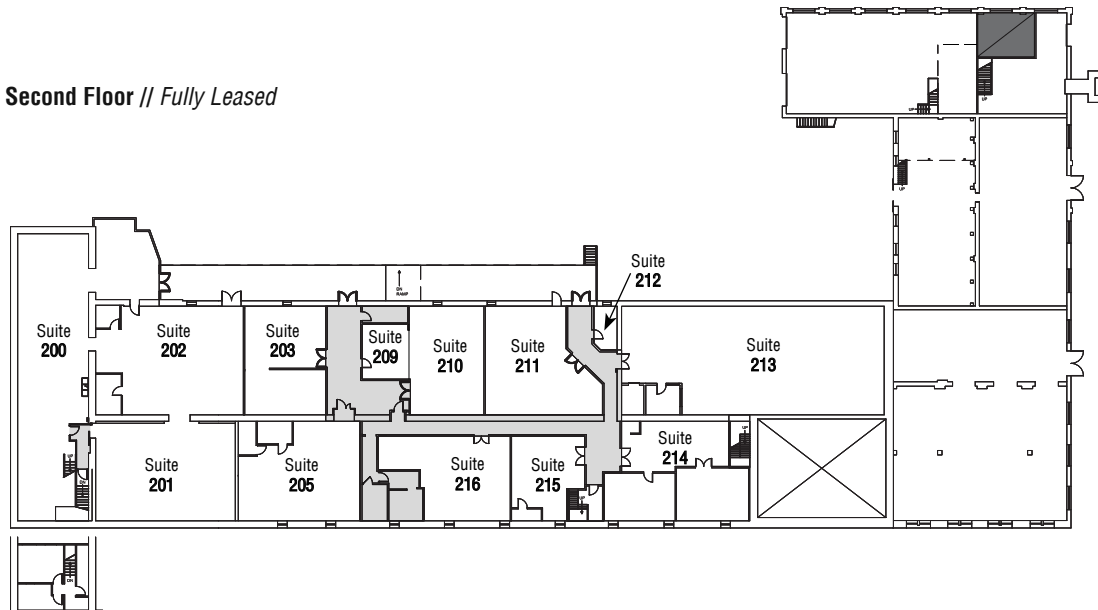


First Floor

Suite 131/132

Square Footage: 4,554 rsf

Second Floor // Fully Leased



**SABEY**

12201 Tukwila International Blvd. 4th Floor  
Seattle, WA 98168