

# THE ORIGINAL RAINIER BREWERY

Malt House, 5840-5890 Airport Way South, Seattle WA

Visit us at [sabey.com](http://sabey.com)

Clete Casper

[cletec@sabey.com](mailto:cletec@sabey.com)

206.277.5229

Joe Sabey

[joes@sabey.com](mailto:joes@sabey.com)

206.281.8700

Debbie Sabey

[debbies@sabey.com](mailto:debbies@sabey.com)

206.281.8700



## MALT HOUSE

At The Original Rainier Brewery



### The Malt House at The Original Rainier Brewery

Spacious areas for creative enterprises including light manufacturing, food production, creative businesses and artists. Size of spaces makes them versatile as well as utilitarian. Located just off Airport Way South. This circa 1914 building has ample on and off street parking. Be part of the unique Georgetown District!

#### Highlights

- Exposed brick
- Historic detailing
- Dynamic Arts/Craftsman Community
- 19 ft. clear ceiling height
- On site parking
- Easy access to I-5 and Highways 99 & 509
- Walk to restaurants and specialty shops
- Dynamic arts/crafts community and more...



## SABEY

12201 Tukwila International Blvd. 4th Floor  
Seattle, WA 98168

# THE ORIGINAL RAINIER BREWERY

**Malt House, 5840-5890 Airport Way South, Seattle WA**

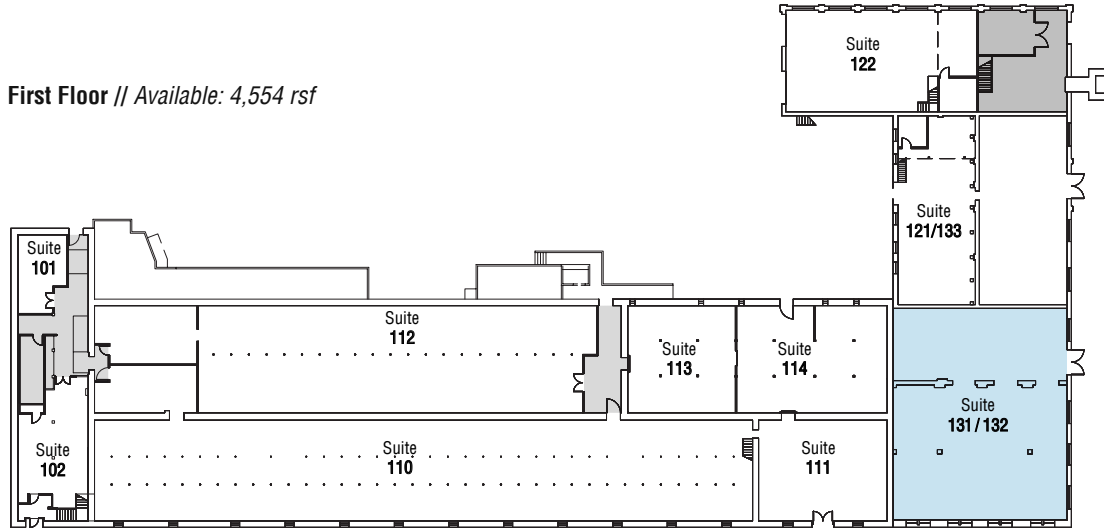
Visit us at [sabey.com](http://sabey.com)

Clete Casper  
cletec@sabey.com  
206.277.5229

Joe Sabey  
joes@sabey.com  
206.281.8700

Debbie Sabey  
debbies@sabey.com  
206.281.8700

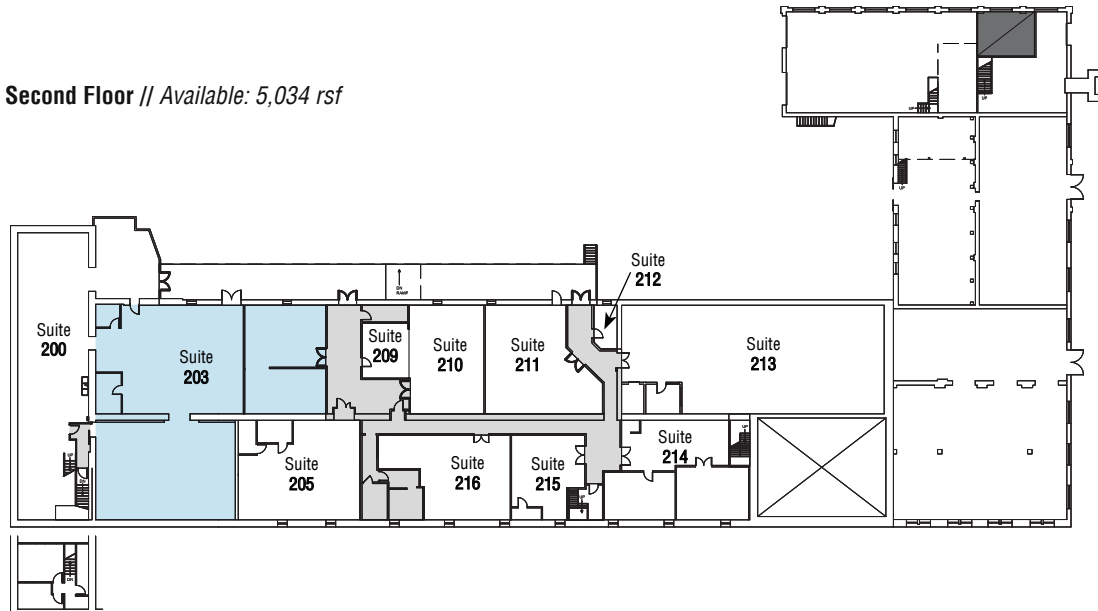
**First Floor // Available: 4,554 rsf**



**AVAILABLE  
May 1, 2018 or before**

■ **First Floor**  
**Suite 131/132**  
Square Footage: 4,554 rsf

**Second Floor // Available: 5,034 rsf**



**AVAILABLE  
January 1, 2018**

■ **Second Floor**  
**Suite 203**  
Square Footage: 5,034 rsf



12201 Tukwila International Blvd. 4th Floor  
Seattle, WA 98168