



# Everett Technical Park I

1615 75th St SW Everett WA 98203

## Description

Sabey's Everett properties, Everett Technology Campus I and Everett Technology Campus IV (Build to Suit) are both located in the heart of the Pacific Northwest's booming commercial aeronautics industry and immediately adjacent to Boeing's 747 and 787 manufacturing facilities. The sites have excellent access to transportation corridors. Please click on the respective links for additional information.

Everett Technical Park I is a 95,000 sf 2 story building located in the heart of the Everett industrial hub. Only minutes from the Boeing complex with excellent access to transportation corridors. Ideally suited for office, call center, education/training, the building is supplied with ample electricity and fiber connectivity. Generous column spacing of 24' x 27' on the first floor and 24' x 54' on the second provide maximally efficient layout options. Generous parking.

## Highlights

- Two story building offering high quality office multi-purpose space.
- Either space is divisible into smaller suites.
- Strategically located just 25 minutes North of Seattle and two blocks East of the Boeing facility with easy access to I-5 and SR-526
- Ample Electrical Capacity
- Fiber Connectivity
- Abundant Parking



### Scan for more information.

To view on your mobile device, download a QR reader app through your device's app store.

Clete Casper  
cletec@sabey.com  
206.277.5229

Joe Sabey  
joes@sabey.com  
206.281.8700

# SABEY

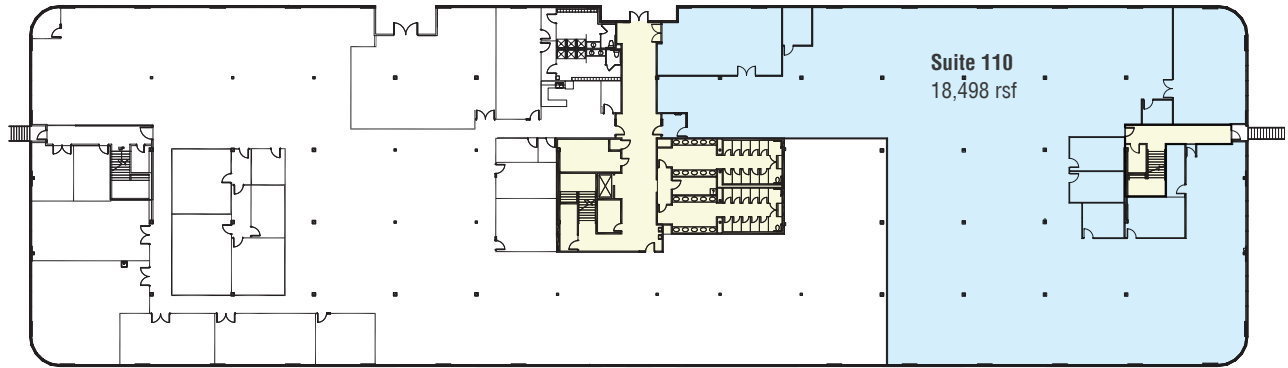
12201 Tukwila International Blvd. 4<sup>th</sup> Floor  
Seattle, WA 98168 | Visit us at [sabey.com](http://sabey.com)

# Everett Technical Park I

1615 75th St SW Everett WA 98203

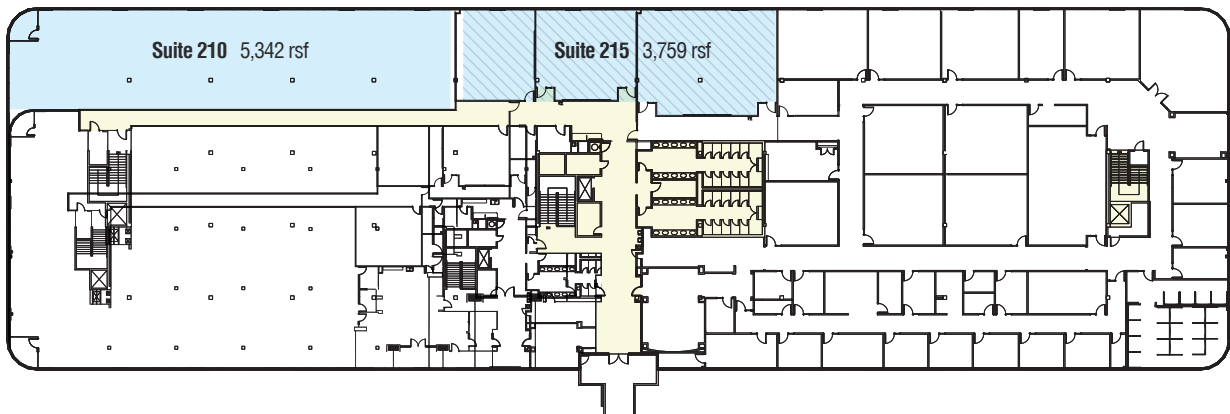
Either space is divisible into smaller suites.

## 1st Floor



Available Space // 18,498 rsf    Common Area

## 2nd Floor



Available Space // 9,101 rsf    Common Area



### Scan for more information.

To view on your mobile device, download a QR reader app through your device's app store.

Clete Casper  
cletec@sabey.com  
206.277.5229

Joe Sabey  
joes@sabey.com  
206.281.8700

# SABEY

12201 Tukwila International Blvd. 4<sup>th</sup> Floor  
Seattle, WA 98168 | Visit us at [sabey.com](http://sabey.com)