



6th & Wall

521 Wall Street Seattle WA 98121

Description

All around are views of the essential Seattle – the monorail coursing above tree-lined 5th Avenue, the Seattle Space Needle a few blocks away and the spectacular new Gates Foundation Campus just up the street. 6th & Wall occupies an entire block in the center of one of Seattle's most dynamic neighborhoods between the Seattle waterfront and South Lake Union.

And in the center, the signature 6th & Wall building – 43,716 square feet of high profile style, immediately available.

Contacts: Clete Casper Joe Sabey
cletec@sabey.com joes@sabey.com
206.277.5229 206.281.8700

SABEY

12201 Tukwila International Blvd. 4th Floor
Seattle, WA 98168 | Visit us at sabey.com



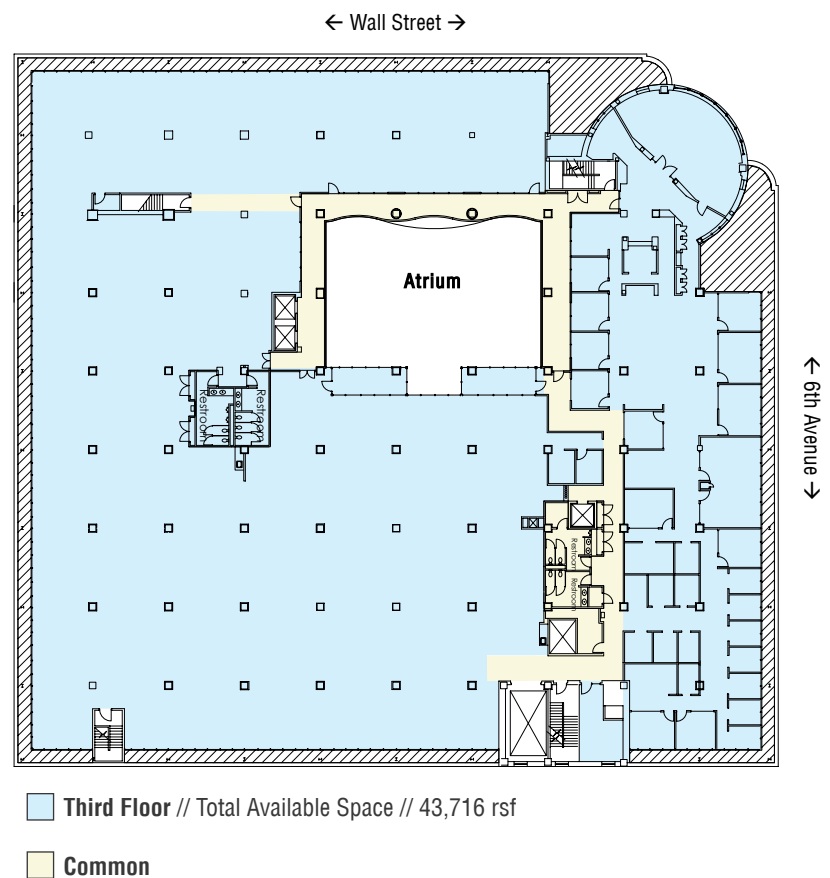
6th & Wall

521 Wall Street Seattle WA 98121 // Floor 3

6th & Wall is signature style neatly occupying an entire block in one of Seattle’s most dynamic neighborhoods. The turreted entrance, elegant lobby and light-filled central atrium immediately tell your visitors that they have arrived in a remarkable place. The impression continues into your premises which offer panoramic views of the neighborhood and Seattle’s Central Business District immediately to the south.

Highlights

- Exterior signage potential
- Ready access to I-5, 520 and Hwy 99
- Walking distance to the Seattle Waterfront and services including Whole Foods and Top Pot Doughnuts
- Metro Express Stop on Wall Street
- Large, efficient floor plates
- Newly remodeled lobby with soaring atrium
- Heavy live floor loads
- Large freight elevator
- Secure structured parking available
- New Starbucks Cafe



Clete Casper
cletec@sabey.com
206.277.5229

Joe Sabey
joes@sabey.com
206.281.8700

SABEY

12201 Tukwila International Blvd. 4th Floor
Seattle, WA 98168 | Visit us at sabey.com